

2013

DELTA PLUS

Technical specifications

ICMA017

This manual gives detailed information about the physical composition, operational and technical features of the DELTA PLUS.



1. INTRODUCTION

The DELTA PLUS is a configuration device for the SIX-DG electronic sectionalizer; it can query stored data and change configuration parameters using wireless or cable connection in a simple and versatile way. It does not require external power supply or any additional device.

This device allows the operators in charge of handling and operating the SIX-DG, to perform queries and parameter changing when they are at the installing point.



IMAGE 1. DELTA PLUS

CONTENT:

- DELTA PLUS configuration device
- 4 AA rechargeable batteries
- 12Vdc, 800mA power supply
- DELTA PLUS - SIX-DG connecting cable
- DELTA PLUS software update cable

2. DELTA PLUS PARTS

- Main circuit board
- Keypad
- LED light indicator for:
 - ON/OFF
 - Battery
 - RF signal
 - Information
- LCD Display
- Serial communication port
- USB 2.0 data port



IMAGE 2. DELTA PLUS PARTS

BATTERIES

Four NiMH AA size rechargeable batteries, 1.2V, 2000 to 2800mA.

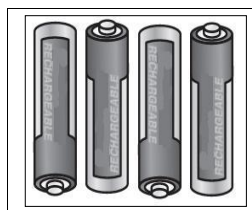


IMAGE 3. BATTERIES

DELTA PLUS – SIX-DG CONNECTING CABLE

It is an 80 cm long cable with two different connections type: RJ45 at DELTA PLUS end and MINI-DIM at the SIX-DG end.

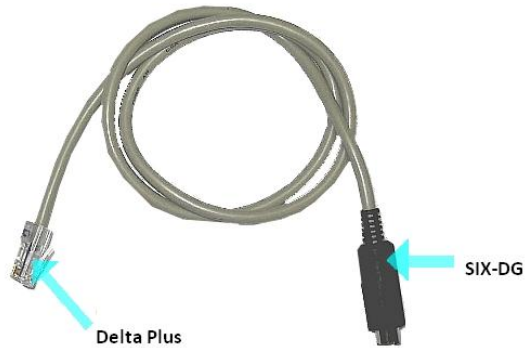


IMAGE 4. CONNECTING CABLE

3. WIRELESS COMMUNICATION

A 433 MHz transceiver is used to communicate with the SIX-DG's own transceiver for parameters configuration, downloading events statistics and queries for data and events.

-
- *Operating voltage: 4.8 VDC*
 - *Batteries: 4xAA NiMH rechargeable type*
 - *Power supply: 12Vdc 800 mA*
 - *Temperature working range: 0 to 45 °C*
 - *Relative humidity: up to 95% (non condensed)*
 - *Measures: 22.6 x 11.2 x 3.2 mm*
 - *Weight: 430 gr*
 - *LCD graphic display 128x64*
 - *17 keys, surface keypad with LED indicating lights*
 - *433 MHz RF module with a 100 m range (typical)*
 - *External RF antenna*

4. INTRODUCTION

The *SIGMA SIX* software allows the SIX-DG parameters visualization and configuration as well as event data statistics.

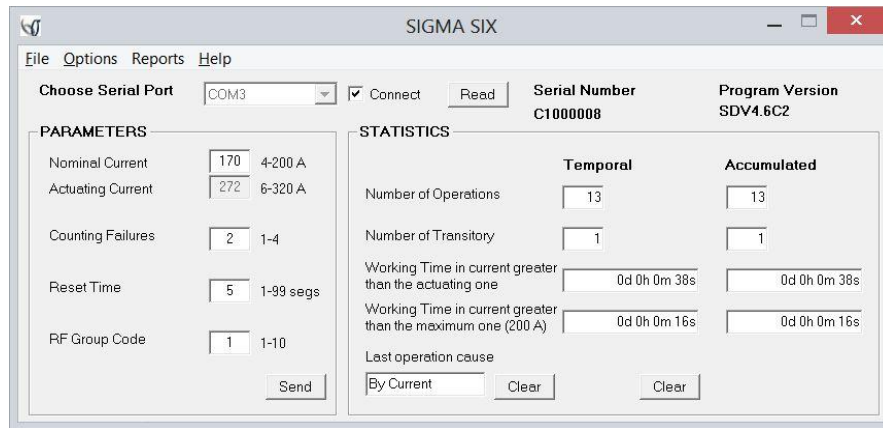


IMAGE 1. SIGMA SIX MAIN SCREEN



IMAGE 2. CONTENT